



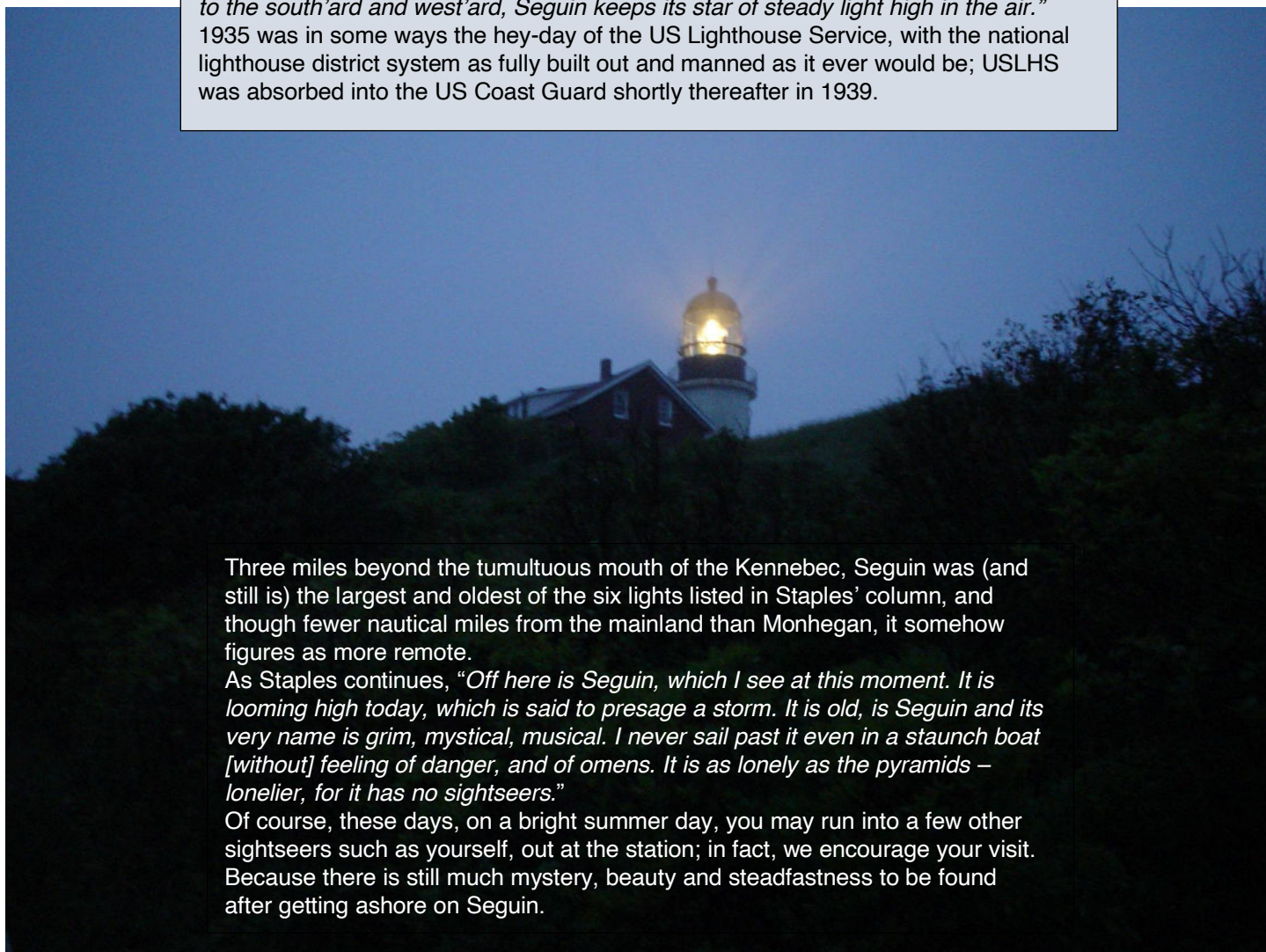
## THE SEGUIN SENTINEL

*"You ask yourself – 'Has it been cast away?' And lo! It shines again, faithful. All these lights teach steadfastness. They enter the soul, if permitted. Long after we leave here, I hear the memorized echo of Seguin as it lows, like a great bull, out there in storm, fog, blackness amid the roar of surges." ~ Arthur Gray Staples (1861-1940), "Six of My Own Lighthouses", Lewiston Evening Journal, August 3, 1935.*

On the editorial staff of the *Lewiston Journal* for over 50 years, Staples grew up in Bath, graduating from Bath High School to enter Bowdoin College in the class of 1882. His popular column "Talks on Common Themes" was a wide-ranging tribute to the state of Maine.

The six lights he references in this particular column, all seen from his summer cottage on Squirrel Island off Boothbay Harbor, are the Cuckolds, Monhegan, Ram Island, Burnt Island, the gas-buoy light on Bantam Rock (outside of Damariscove), and *"over to the south'ard and west'ard, Seguin keeps its star of steady light high in the air."*

1935 was in some ways the hey-day of the US Lighthouse Service, with the national lighthouse district system as fully built out and manned as it ever would be; USLHS was absorbed into the US Coast Guard shortly thereafter in 1939.



Three miles beyond the tumultuous mouth of the Kennebec, Seguin was (and still is) the largest and oldest of the six lights listed in Staples' column, and though fewer nautical miles from the mainland than Monhegan, it somehow figures as more remote.

As Staples continues, *"Off here is Seguin, which I see at this moment. It is looming high today, which is said to presage a storm. It is old, is Seguin and its very name is grim, mystical, musical. I never sail past it even in a staunch boat [without] feeling of danger, and of omens. It is as lonely as the pyramids – lonelier, for it has no sightseers."*

Of course, these days, on a bright summer day, you may run into a few other sightseers such as yourself, out at the station; in fact, we encourage your visit. Because there is still much mystery, beauty and steadfastness to be found after getting ashore on Seguin.



## FROM THE TOWER

I am pleased to announce that we have added 2 new board members recently:

Gordon Reed of Bath and Kennebec Point is joining us to lead in managing our ongoing projects. He has extensive knowledge and experience in the waters around Seguin. You might have seen him at Robinhood Marina sometime in the past decades where he worked for many years.

Betsy Lane has joined us as Treasurer, a position her mother Barbara Paiement held in some of her many years on the board. Betsy and husband Craig owned and operated Camp Seguin on the Reid State Park road for 15 years, where she managed the campground reservations, books and other miscellaneous tasks. She recently retired after working as Secretary at Woolwich Central School for 15+ years. Betsy has been looking at, talking about and enjoying Seguin since 1961.

We are making great gains in our Anniversary Campaign as well as connecting to other history-oriented non-profit organizations both in Maine and throughout the nation. We hosted a visit from Henry Gonzales, President of the US Lighthouse Society, and have been having discussions with their Lighthouse Managers Advisory Group. We have made some interesting contacts with Maine Preservation, an organization supporting historic preservation here in Maine. We expect to get them out to the island this summer.

~ Read Armstrong, *President, FOSILS Board*

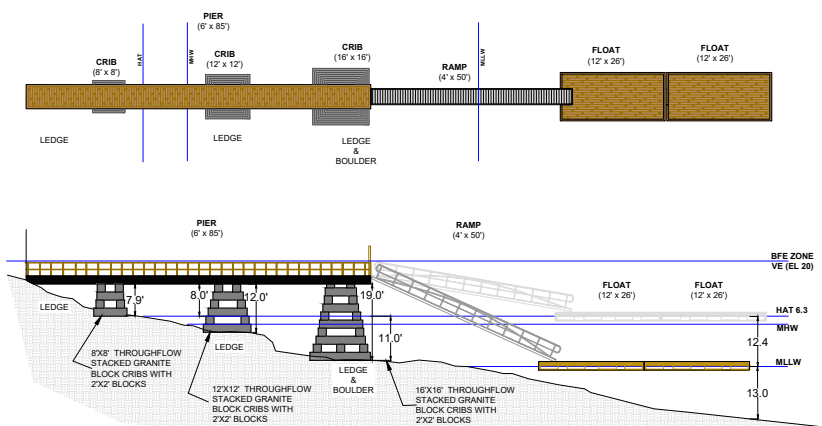
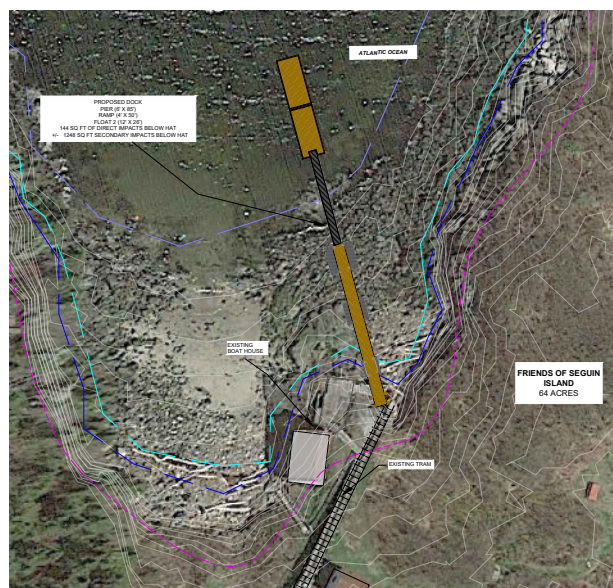
FOSILS, with the support of Flycatcher LLC, our environmental consultant, submitted on January 2nd a permit application to the Maine Department of Environmental Protection (MDEP) for a proposed dock project at Seguin Island. This proposed project will consist of a pier, a seasonal ramp, and floats, providing better access for our visitors to explore and enjoy the island, plus provide our volunteers and keepers easier access for upkeep and maintenance of the island's buildings and facilities. At this point, we are looking forward to obtaining MDEP's comments on our application and eventually a permit, which will allow FOSILS to engage necessary design and construction services.

~ Dave Patton, *Vice President, FOSILS Board*

## OUR ANNIVERSARY CAPITAL CAMPAIGN

The current challenge in our 3 year strategic plan is building a dock for our visitors and to land supplies safely on the island. This is the largest project ever undertaken by FOSILS, with its cost projected well into six figures. Our success last year in the Capital Campaign, thanks to your support, has given FOSILS the confidence to undertake this colossal effort. We are so fortunate to have so many supporters. Please visit our web page ([seguinland.org](http://seguinland.org)) to monitor our campaign progress and island news during this summer. We are very excited for the 2025 season and for giving you the very best visit possible when you come out to the island. Oh yes, I am the Capital Campaign Chair.... So, I must say, "Please support your island with your donations." This year, all donations will be matched by a generous benefactor.

~ Tip Koehler, *Capital Campaign Chair*



INTRODUCING OUR 2025 KEEPERS



Brother and sister team of Peter and Lisa Flanagan are siblings who grew up in Portland, Maine. Peter is a livestock veterinarian who is retiring from his position with the United Nations Food and Agriculture Organization in Bangkok, Thailand. Lisa is the Associate Director of the Baldwin Center for Learning and Teaching for Multilingual Communication at Bowdoin College.

PETER: The idea of spending time on a small Maine island has hovered off-and-on in my mind for many, many years. Fate seemed to have another plan for me as my work took me to different corners of the world. A few years ago, my long-time friendship with a previous Seguin keeper, Rick Hartman, rekindled the embers of my dormant dream of returning to an island in Maine. Rick's tales of life on Seguin reminded me that I did not have to travel far to have a bit of adventure, a bit of fun and a bit of invigorating discomfort. After all, the warmest summer day on Seguin will be colder than the coldest winter day in Bangkok. Although I once wondered why being sent to Rome would be unkind, the lyrics of the "State of Maine" song have been ringing in my ears ever since I first learned them in fourth grade:

*"Should fate unkind send us to roam,  
The scent of the fragrant pines, the tang of the salty sea  
Will call us home."*

I am looking forward to living and breathing the history, geography, and fog-filled Seguin air this summer.

A new charter ferry to Seguin will be in service this year, with two daily trips departing from Sebasco Harbor Resort in Phippsburg.

For further information:  
Capt. Shawn Mercer  
RippleSmith Sailing  
ripplesmithsailing.com

LISA: I've stood on Popham and Seawall Beach looking off at Seguin for years. As I swam in the waves and walked through the fog, Seguin always hung on the near horizon just out of reach. I know from rowing on the Charles River how different everything looks from the water, and I'm eager to experience the saltwater version. My mother dated a lighthouse keeper in the early 1940s, and I used to imagine that solitary path she didn't take. This opportunity to caretake Seguin has everything that has appeal right now: an element of time travel, limits that force you to expand, and just enough human interaction without too much socialization. To spend an extended period again with Peter for the first time since we were in our 20s will be great.



Seguin Island Light Station has been selected as a pilot relay location in Maine for a new North American Right Whale collision avoidance system.

The system – StationKeeper – is being developed by Maritime Information Systems, Inc., under the auspices of NOAA, and was recently successfully tested in Cape Cod Bay. Most vessels 65 feet or longer must travel at 10 knots or less in seasonal management areas for Right Whales, along the U.S. east coast at certain times of the year. This mandatory regulation is aimed at reducing the chances of collisions with North Atlantic Right Whales. 10 knots gives ships time to maneuver

away from the whales as well as giving the whales time to move out of danger.

The StationKeeper relay station on Seguin Island will monitor commercial vessel traffic between Monhegan and Cape Elizabeth and transmit a maximum 10 knot speed notification to the ship's AIS (Automatic Identification System) receiver.

In the tests performed on Cape Cod Bay, 85% of ships responded to this message and slowed their speed to 10 knots or less. The StationKeeper program intends to utilize lighthouse stations along the Maine coast to provide total coastal coverage.



**Friends of Seguin Island Light Station**  
**72 Front Street, Suite 3**  
**Bath, Maine 04530-2657**

**Did you know?** Seguin Keeper Herbert Spinney (Ass't. 1893-1898, Head 1903-1907) became President of the Maine Ornithological Society (now Maine Audubon). Many of his bird specimens were collected after fatal night collisions with the glowing light.



(Postage area)

(Address area)

FRIENDS OF  
**SEGUIN ISLAND LIGHT STATION**

**Mission:** *To distinguish Seguin Island Light Station as part of Maine's maritime heritage through education and preservation.*

**Board of Directors:**

Read Armstrong, *President* • Dave Patton, *Vice President*  
Allison Lubin, *Secretary* • Betsy Lane, *Treasurer*  
Karissa Davan • Kim Emerson • Chris Hall  
Tip Koehler • Tom McNamara • Gordon Reed

Executive Assistant – Lauren O'Reilly. You will reach Lauren at our contact information to the right.

**CONTACT US:**

Friends of Seguin Island  
Light Station (FOSILS)

72 Front Street, Suite 3  
Bath, ME 04530-2657

(207) 443-4808

[keeper@seguinisoland.org](mailto:keeper@seguinisoland.org)

[www.seguinisoland.org](http://www.seguinisoland.org)

**Marine Learning Project and Schooner *Harvey Gamage***

This year, visitors will be seeing the 130-ft. schooner *Harvey Gamage* visiting Seguin on occasion. The *Gamage* is part of the Marine Learning Project (MLP) and serves as a training vessel for Maine elementary to middle school students to access the water and experience the thrill of sailing on the ocean. Students aboard the *Gamage* will be exploring along the coast of Maine and Seguin is proud to be one of those ports o' call.

How will a 130-ft.-long 100-ton schooner fit in the cove? It won't, but through the generous donation of Portland Yacht Services, a new heavy mooring will be set in an area that will safely fit the *Gamage*. When the *Gamage* is not at the island, the mooring will be available for similar sized vessels. We will be asking for donations for the use of this mooring. Proceeds will be equally split between the MLP and Seguin, so it is a win-win partnership between FOSILS and the Marine Learning Project. We ask that smaller boats continue to use the five smaller moorings inside the cove. Come out and see us!

